



HAWKSTONE

a place for living

Golden Eagle Collection



- Rich blend of patio and single-family lots - small to large
- Generous open space
- 16-acre park with pond
- Neighborhood trails
- Golf cart paths to Eaton Country Club
- Recreational clubhouse with pool
- Maturing landscape
- Mountain views
- Excellent schools and sports reputation
- 18 minutes to Fort Collins
- 13 minutes to Windsor
- 7 minutes to Greeley
- Full service supermarket-Heritage Market



Payant Homes, LLC

Customer Satisfaction . . . Our Goal, Our Passion

www.payanthomes.com
www.hawkstonehomes.com



BUILT GREEN
BUILT BETTER



Layne Payant
CRS, CSP, EcoBroker
970.302.6894 Mobile
970.454.0883 Office
lpayant@thegroupinc.com



Actual floor plan and dimensions may vary from artists rendering. Specifications and pricing may change without notice. Builder reserves the right to substitute materials and features of equal or better quality without home buyer approval. February 19, 2008.



HAWKSTONE
a place for living

Golden Eagle Collection



Pebble Beach

Some of our many features on this home:

- 9' Basement ceilings
- Covered back patio and covered front porch
- Tray ceiling in master and entry hall
- Hand troweled walls
- Wood flooring
- Travertine tile countertops in kitchen
- Tankless water heater
- 1,820 Square feet
- Covered back patio with walls
- Oversized, finished garage
- Custom, knotty alder cabinets
- Full finished basement

Ask us about our your many interior feature choices!



www.payanthomes.com
www.hawkstonehomes.com



**Payant
Homes, LLC**

Customer Satisfaction . . . Our Goal, Our Passion



Layne Payant
CRS, CSP, EcoBroker
970.302.6894 Mobile
970.454.0883 Office
lpayant@thegroupinc.com



Actual floor plan and dimensions may vary from artists rendering. Specifications and pricing may change without notice. Builder reserves the right to substitute materials and features of equal or better quality without home buyer approval. February 19, 2008.

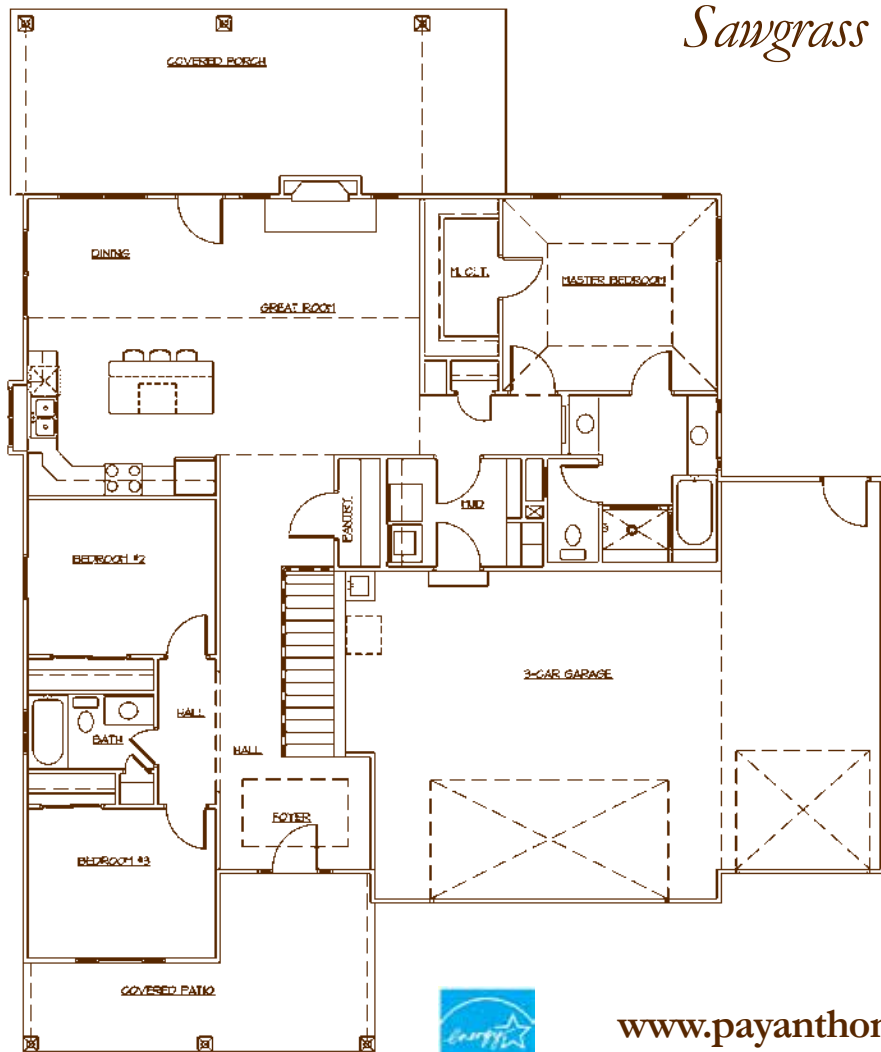


HAWKSTONE
a place for living

Golden Eagle Collection



Sawgrass



Some of our many features on this home:

- 9' Basement ceilings
- Covered back patio and covered front porch
- Tray ceiling in master and entry hall
- Art niches
- Hand troweled walls
- Hickory wood flooring
- Granite countertops
- 95%, 2 Stage, variable speed furnace
- Tankless water heater
- Vaulted 9'/10' ceiling in entry hall and great room
- 1,748 Square feet
- Mud room with lockers, shelves and broom closet
- Large pantry

Ask us about our your many interior feature choices!



**Payant
Homes, LLC**

Customer Satisfaction . . . Our Goal, Our Passion

www.payanthomes.com
www.hawkstonehomes.com



BUILT GREEN
BUILT BETTER



THE GROUP INC.
Real Estate

Layne Payant
CRS, CSP, EcoBroker
970.302.6894 Mobile
970.454.0883 Office

lpayant@thegroupinc.com



Actual floor plan and dimensions may vary from artists rendering. Specifications and pricing may change without notice. Builder reserves the right to substitute materials and features of equal or better quality without home buyer approval. February 19, 2008.